

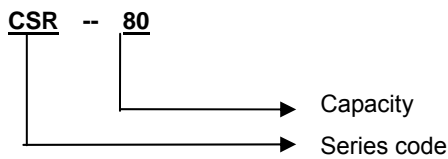
CSR series shell and pipe evaporators



1. Product description

The CSR series Products are shell and pipe evaporators for refrigeration system. Our company is a special manufacturer for those products with National issued pressure production license. All are produced according to the National standard under the supervision of the national quality bureau. The cleanness of the tubes is strictly controlled, an anti-frosty broken drainage is set, and the highest efficiency is attained by inner groove copper tubes.

2. Nomenclature



3. Specifications

3.1 CSR (single system) evaporator

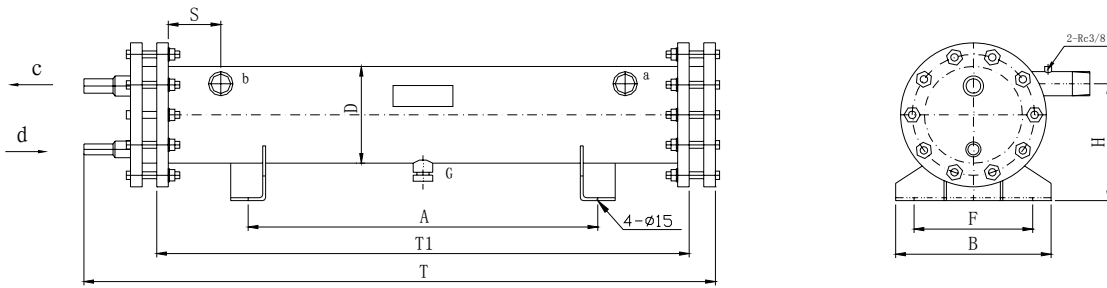
Model	Capacity (kW)	Area (m ²)	Water flow (m ³ /h)	Overall size mm					Install size mm			Connect pipe (Ømm)			
				D	T	T1	B	H	F	A	S	C	D	G	w
CSR-05	17.5	1.93	3	168	1060	914	290	202	150	600	90	22	16	3/8	1 1/4"
CSR-08	28	2.81	5	219	1060	914	350	253	200	600	90	28	16	3/8	1 1/4"
CSR-10	35	3.55	6	219	1060	914	350	249	200	600	90	35	16	3/8	1 1/2"
CSR-15	53	4.65	9	219	1350	1200	350	244	200	800	90	42	22	3/8	2"
CSR-20	70	7.0	12	273	1350	1200	420	298	250	1200	100	54	22	3/8	2"
CSR-25	88	8.76	15	273	1650	1500	420	318	250	1200	100	54	28	3/8	2"
CSR-30	105	9.34	18	273	1750	1600	420	318	250	1200	100	54	28	3/8	2"
CSR-35	122	10.5	21	273	1950	1800	420	310	250	1400	120	54	28	3/8	2 1/2"
CSR-40	140	11.68	24	273	2150	2000	420	310	250	1400	120	54	35	3/8	2 1/2"
CSR-45	158	13.7	27	325	2150	2000	480	362	350	1400	120	54	35	3/8	2 1/2"
CSR-50	175	16.6	30	325	2150	2000	480	355	350	1400	120	54	35	3/4	3"
CSR-60	210	18.3	36	315	2350	2000	480	355	350	1600	120	80	35	3/4	3"
CSR-70	245	19.9	42	315	2350	2000	480	355	350	1600	150	80	35	3/4	3"
CSR-80	280	25	49	351	2600	2400	480	371	380	1600	150	80	35	3/4	4"
CSR-90	315	29	55	351	2800	2600	480	371	380	1600	150	80	35	3/4	4"
CSR-100	350	31	60	410	2800	2600	580	417	440	1600	150	80	35	3/4	5"
CSR-120	420	38	73	410	2800	2600	580	417	440	1600	150	80	35	3/4	5"
CSR-130	455	42	80	410	2800	2600	580	417	440	1600	150	80	54	3/4	5"
CSR-140	490	45	85	410	3210	3000	580	405	440	1800	200	80	54	1"	6"
CSR-150	525	49	90	460	3210	3000	620	455	550	1800	200	80	54	1"	6"
CSR-180	630	58	110	460	3210	3000	620	455	550	1800	200	105	54	1"	6"
CSR-200	700	65	120	530	3510	3300	680	525	600	1800	200	105	54	1"	6"
CSR-250	875	75	150	560	3510	3300	700	555	650	1800	220	105	54	1"	6"
CSR-300	1050	92	180	560	3810	3600	700	520	650	1800	220	134	80	1"	8"

3.2 CSR (double system) evaporator

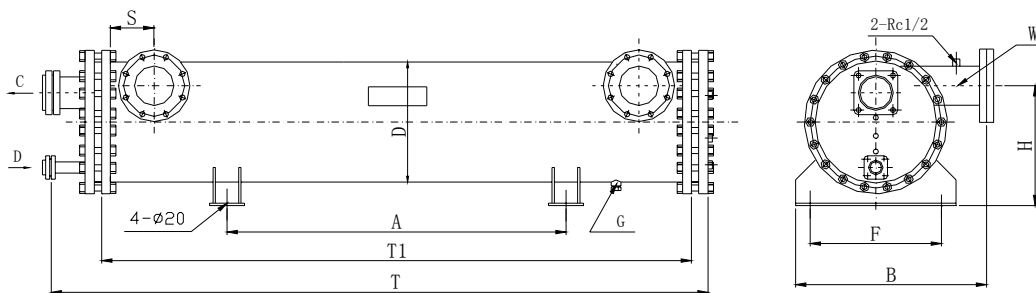
Model	Capacity (kW)	Water flow (m ³ /h)	Overall size mm					Install size mm				Connect pipe (Ømm)		
			D	T	T1	B	H	F	A	S	C	D	G	w
CSR-2×5	30	5	219	1184	914	420	220	2500	600	100	28	16	3/4	1 1/2"
CSR-2×10	70	12	273	1470	1200	420	280	250	800	100	35	22	3/4	2 1/2"
CSR-2×15	100	17.5	273	2100	1800	480	280	350	1000	120	35	22	3/4	2 1/2"
CSR-2×20	140	24	325	2100	1800	480	348	350	1000	120	54	22	3/4	2 1/2"
CSR-2×25	170	29	325	2500	2200	480	335	350	1500	120	54	28	3/4	3"
CSR-2×30	210	36	351	2500	2200	480	360	350	1500	150	54	28	3/4	3"
CSR-2×35	240	42	351	2700	2400	480	340	3800	1500	150	54	28	3/4	4"
CSR-2×40	280	48	410	2900	2600	480	420	3800	1600	150	54	35	3/4	4"
CSR-2×45	300	52	410	2900	2600	580	420	4400	1600	150	54	35	3/4	4"
CSR-2×50	350	60	410	2900	2600	580	412	440	1600	150	66	35	3/4	5"
CSR-2×60	410	67	460	2900	2600	580	482	440	1600	150	66	35	3/4	5"
CSR-2×70	520	85	460	3310	3000	580	467	440	1800	200	80	35	1"	6"
CSR-2×80	560	91	460	3310	3000	620	467	550	1800	200	80	35	1"	6"
CSR-2×90	580	98	460	3310	3000	620	467	550	1800	200	80	35	1"	6"
CSR-2×100	680	105	560	3610	3300	680	565	600	1800	200	80	35	1"	6"
CSR-2×120	820	140	560	3610	3300	700	565	650	1800	220	105	54	1"	6"
CSR-2×150	1020	175	560	3910	3600	700	565	650	1800	220	105	54	1"	8"

5. Overall dimensions

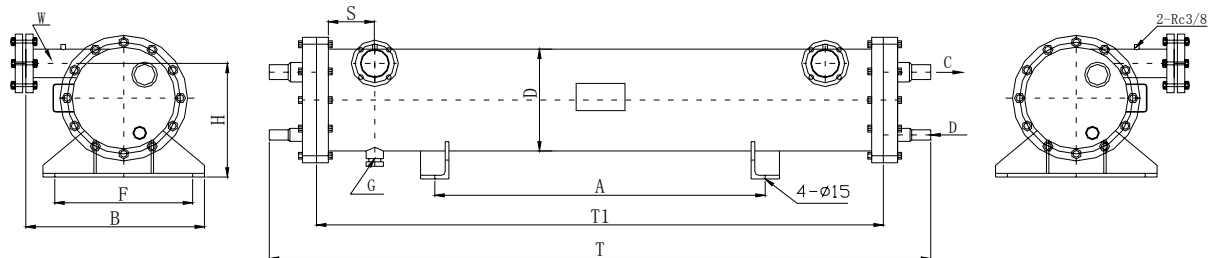
CSR-5 ~ CSR-20 Diagram



CSR-25 ~ CSR-300 Diagram



CSR-2×5 ~ CSR-2×15 Diagram



CSR-2×20 ~ CSR-2×150 Diagram

